

2017 Report of the Metropolitan Area Water Supply Advisory Committee  
to the Minnesota Legislature

# **WATER SUPPLY NOW AND FOR THE FUTURE**

## **STEPS TOWARD SUSTAINABLE WATER SUPPLIES**

Environment Committee  
February 14, 2017





# **WATER SUPPLY NOW AND FOR THE FUTURE**

Steps toward sustainable water supplies



# METRO AREA WATER SUPPLY ADVISORY COMMITTEE (MAWSAC)



## 18 Members + TAC

- State agencies
  - Counties
  - Municipalities/utilities
- 

## Created by Minnesota Legislation

- Minnesota Statutes, Section 473.1565

## Purpose

- Assist and guide Council water supply planning
- Approve Master Water Supply Plan
- Appoint Technical Advisory Committee

# IN “THE LAND OF 10,000 LAKES”

Why worry  
about water supplies?



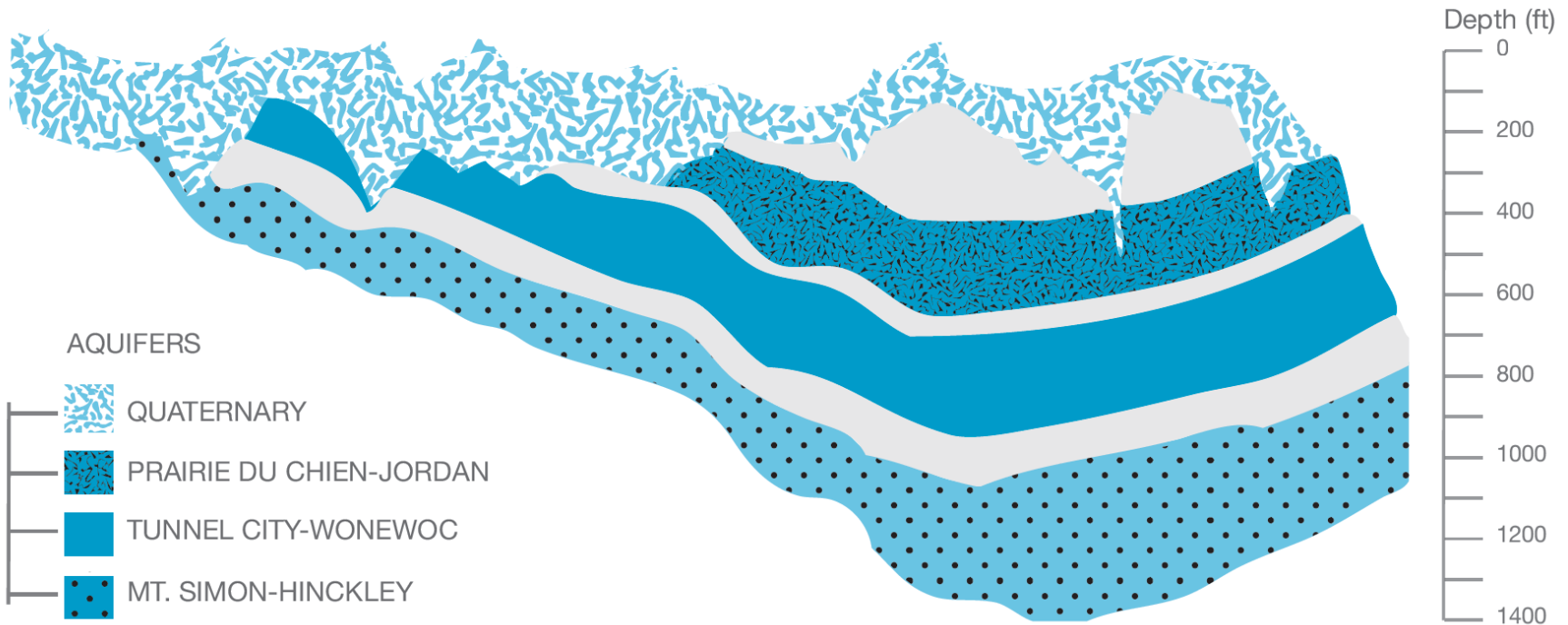
# FOUR EXTENSIVE AQUIFERS

**WEST**  
Wright County

**MINNEAPOLIS**  
Hennepin County

**ST. PAUL**  
Ramsey County

**EAST**  
Washington County



# THREE RIVERS

St. Croix River Flow:

320

Million  
Gallons/Day

Minnesota River Flow:

1,290

Million  
Gallons/Day

Mississippi River Flow:

1,940

Million  
Gallons/Day

# STORMWATER AND WASTEWATER

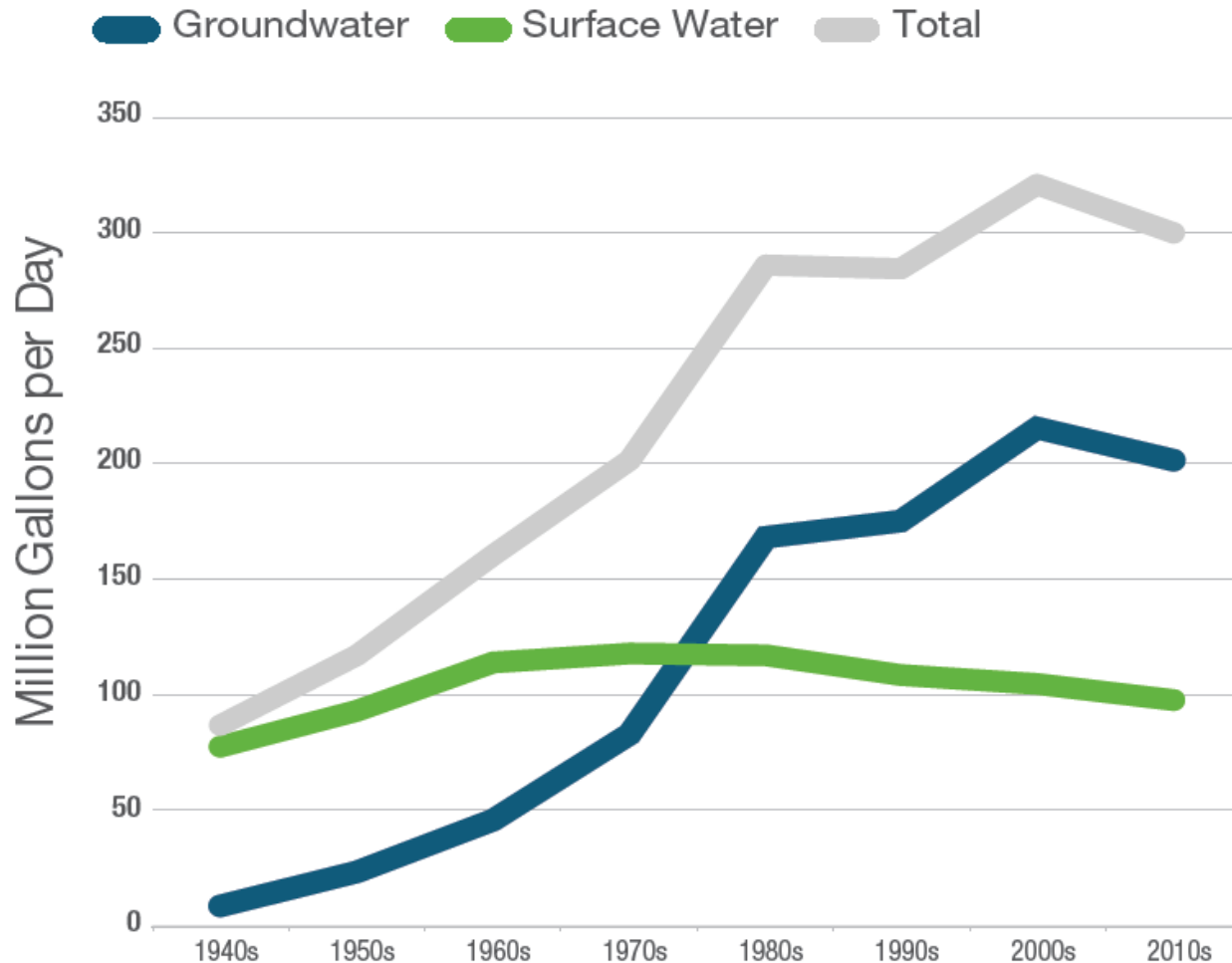
An average home  
can collect over

**600**  
GALLONS  
OF WATER

during  
moderate rain

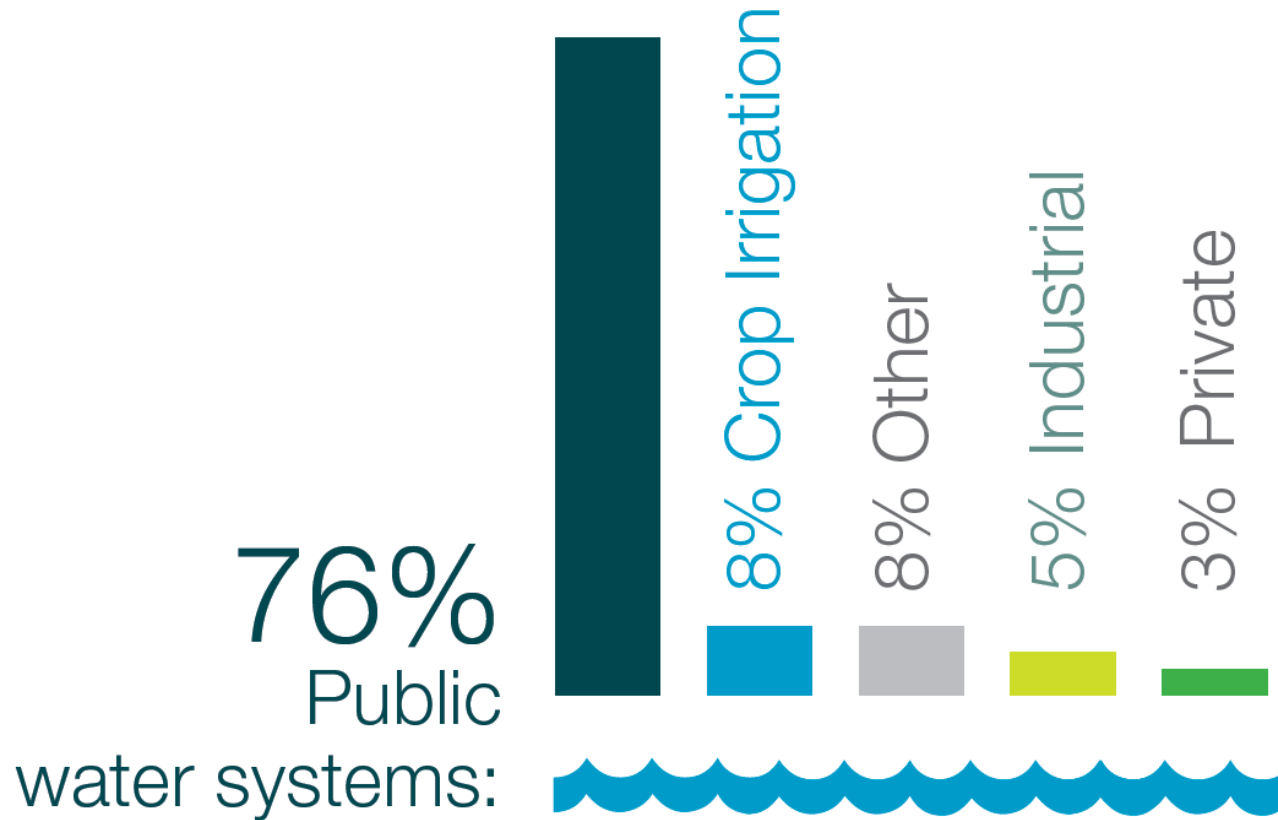


# NOW, WE USE MORE GROUNDWATER COMPARED TO SURFACE WATER

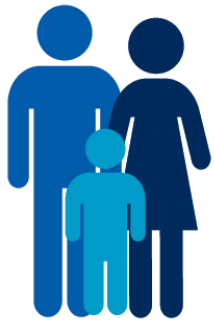




# AVERAGE WATER USE



# THE REGION FACES LIMITS AND INCREASED RISKS

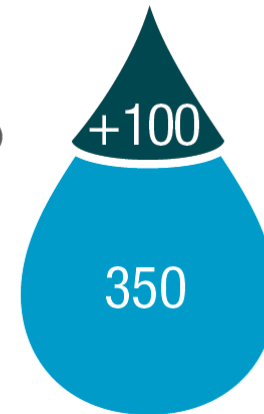


Growing population increases water use

30%  
Population ↑

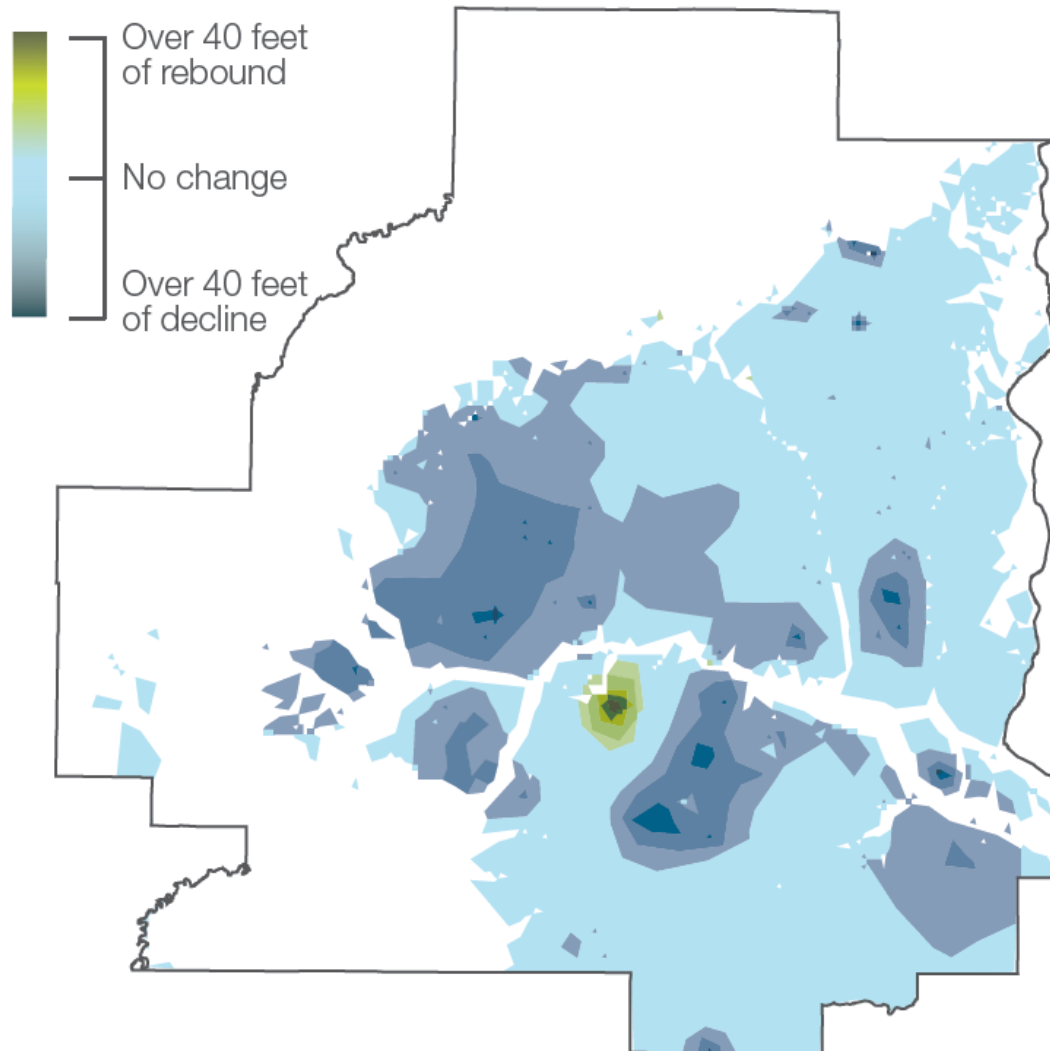
2040  
More Use: ○

2015  
Water Use: ○



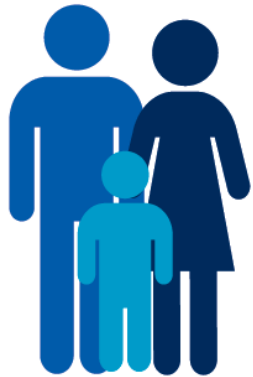
Million Gallons  
per Day

# CHANGE IN PRAIRIE DU CHIEN-JORDAN AQUIFER LEVELS FROM 2040 PUMPING



# REGIONAL GOAL

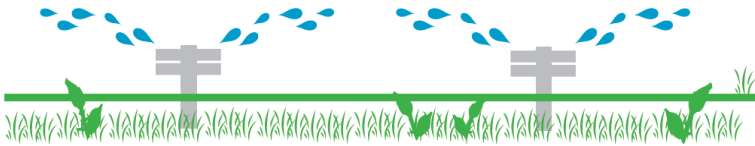
 **90** gallons



per person  
per day

# CITY OF WOODBURY

## CONSERVATION IS OUR WAY TO THE FUTURE



23% In the region

Of residential  
water use is  
used outside  
for irrigation



*“Woodbury is committed to serving as a regional leader in managing the water supply.*

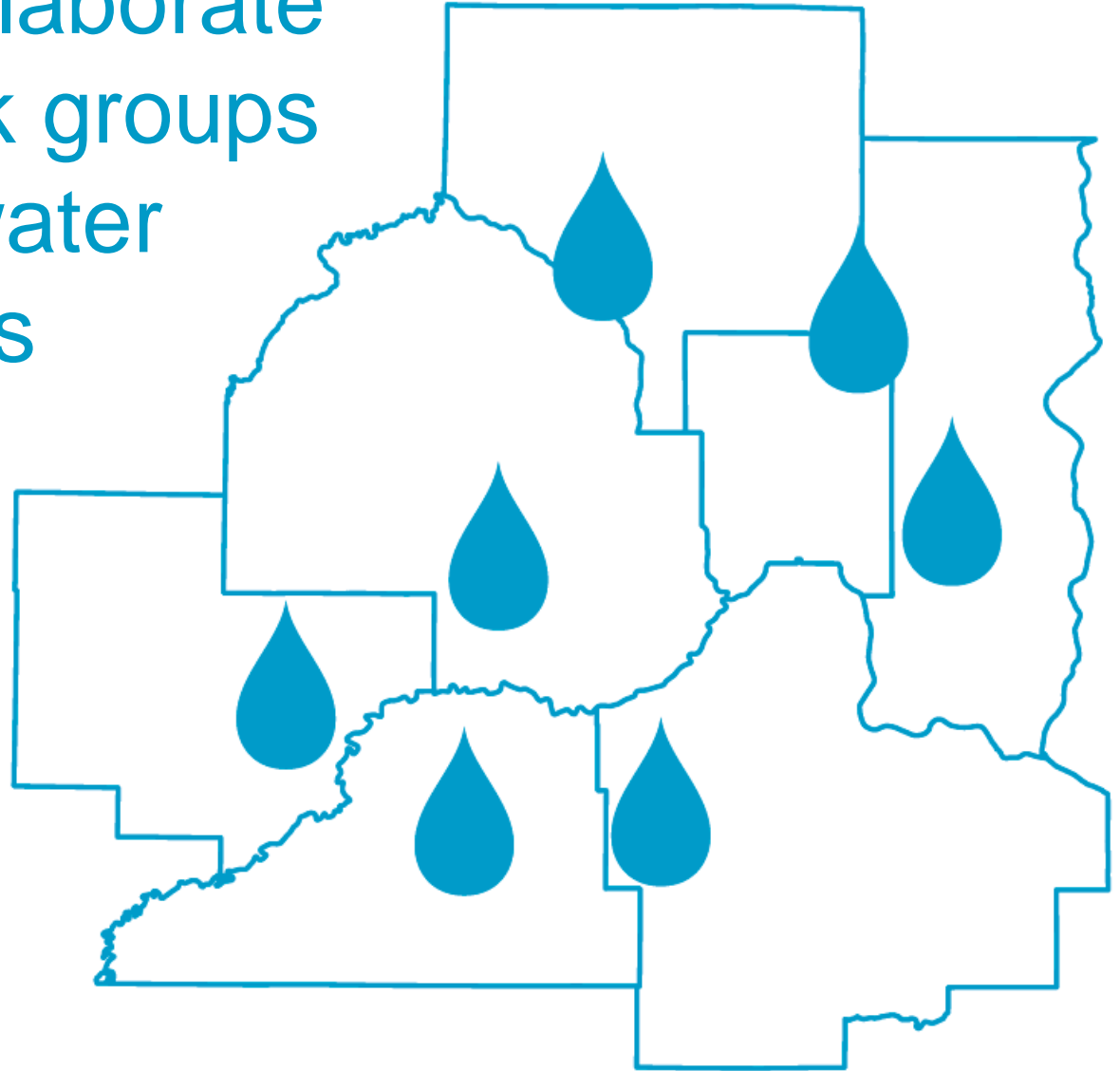
*We must be responsible stewards of our water. Effective conservation efforts will be an imperative part of our future success.”*

Jim Westerman, Woodbury Utilities Supervisor and Environmental Resource Coordinator

# CITIES OF BURNSVILLE & SAVAGE PARTNERSHIPS PRODUCE INNOVATION



Communities and agencies collaborate through work groups to address water supply issues





# FUTURE WORK NEEDS SUPPORT

 **FUNDING**



**EFFICIENCY AND WISE USE OF WATER**




**WORKABLE SOLUTIONS**



**COLLABORATE FOR BETTER RESULTS**





**BY SUPPORTING LOCAL  
LEADERSHIP AND COLLABORATION,  
OUR SHARED WATER SUPPLIES  
WILL SUSTAIN US THROUGH THE  
CHALLENGES AHEAD.**